

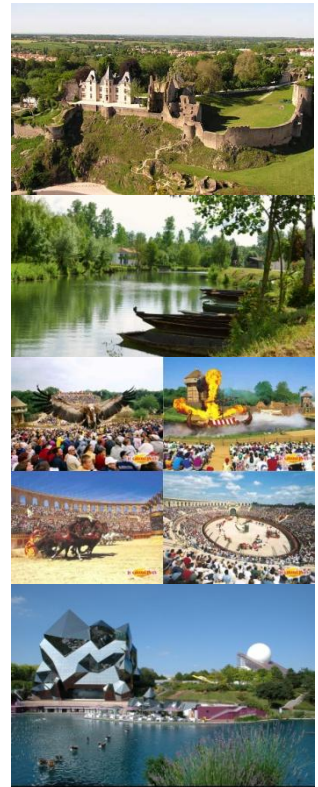
Welcome to an english-speaking assistant !



We are here

November 2019 to July 2020

Bressuire is situated in midwestern France, near the sea. It is an administrative center of the "Deux-Sèvres" department. There are about 20,000 inhabitants if you take into account the villages nearby.



Romuald MOREAU is the school principal

In our school, there are 430 pupils divided into two sites. The first one is located near the town center and the other on the outskirts. We are a city school with deep rural roots. The pupils come from every social background.



What about the job in the school?

For this project, we don't want someone to replace us for the English classes but to help us. We would like to allow our pupils to practice **English in diverse ways.**

Thus, the assistant could teach English via different activities (Theatre, art, dance, music, movies, body language ...)

They should be creative.

One of their qualities will be their adaptability to various classes (children from 3 to 11 years old).

Contact person : Frédérique Chiron
Email : chiron.fred73@gmail.com

