



tactilestudio

Cultural experiences designed for all

With over **400 projects**,
we imagine,
design and produce
inclusive experiences
for museum and heritage sites
around the world.





We combine **unique know-how** and **creative spirit** to enhance your visitors' engagement and deliver ever more enjoyable experiences while **breaking down barriers.**

An **award-winning company**, we lead the field with our **culturally-inclusive approach.**

Our pioneering energy is augmented by thorough exploration and scientific collaborations. We aim to offer you and your visitors new means of engagement, new ways to share and remember cultural experiences.



Selected projects

Louvre Abu Dhabi Museum - Musée du Louvre Paris - Ville de Paris - Arab World Institute, Paris - MuCEM/Museum of European and Mediterranean Civilisations, Marseille - Château de Versailles - **Louis Vuitton Foundation** - Eiffel tower - New York State Parks - Musée d'Orsay - **British Museum** - Victoria & Albert Museum - Royal Botanic Gardens Kew, London - Wellcome Collection London - Haus der Kulturen der Welt, Berlin - **Deutsches Museum, München** - Belvedere, Vienna - Olympic Stadium Montreal - Oman Across Ages Museum - **Expo Dubai 2020**



What do we create?



**Hybrid
interactives**



**Multisensory
trails**



**Architectural
models**



**Apps and
audio tours**



**Orientation
solutions**



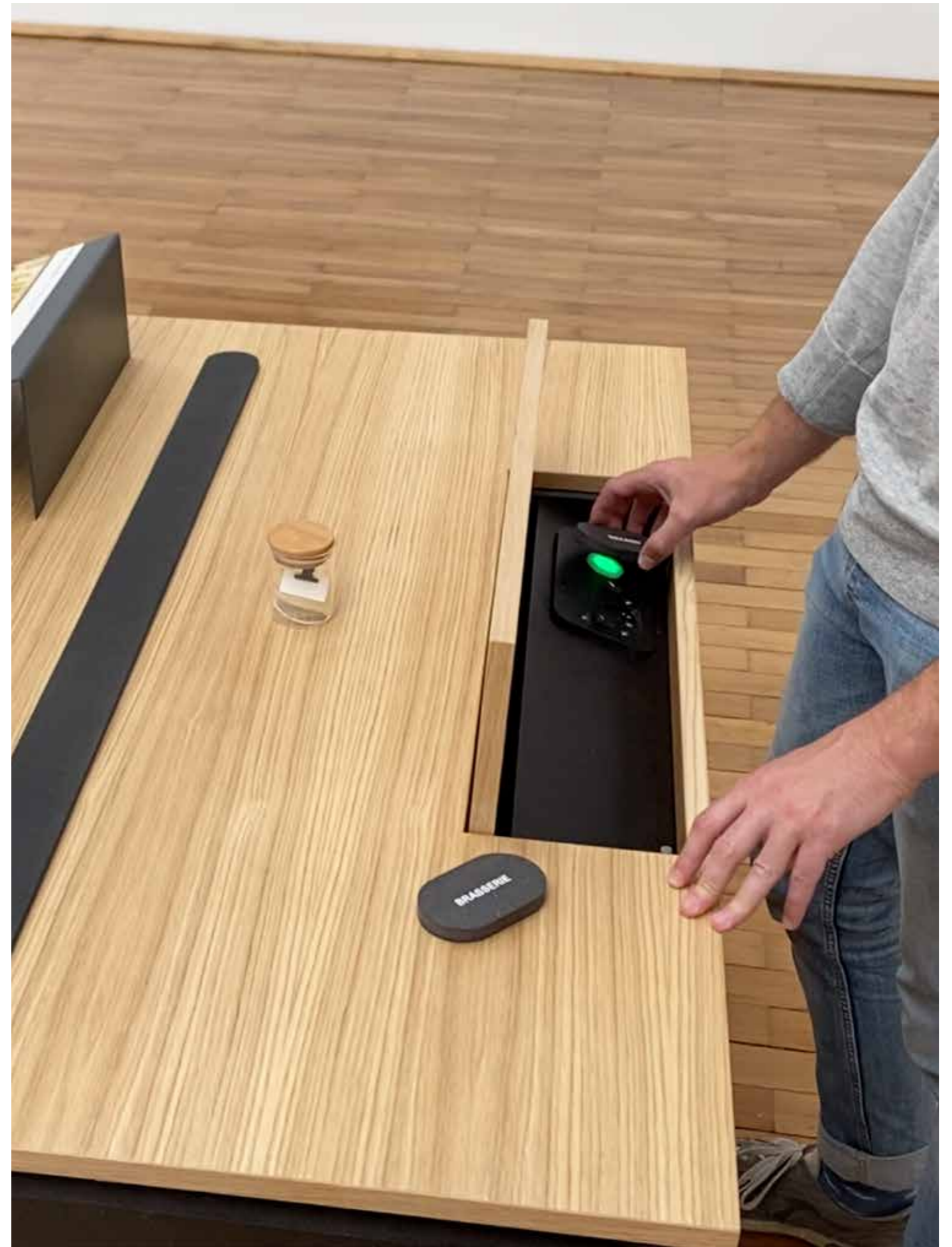
**Atmospheric
interactives**

Hybrid interactives



Musée des Beaux Arts, France
Mutlisensory table

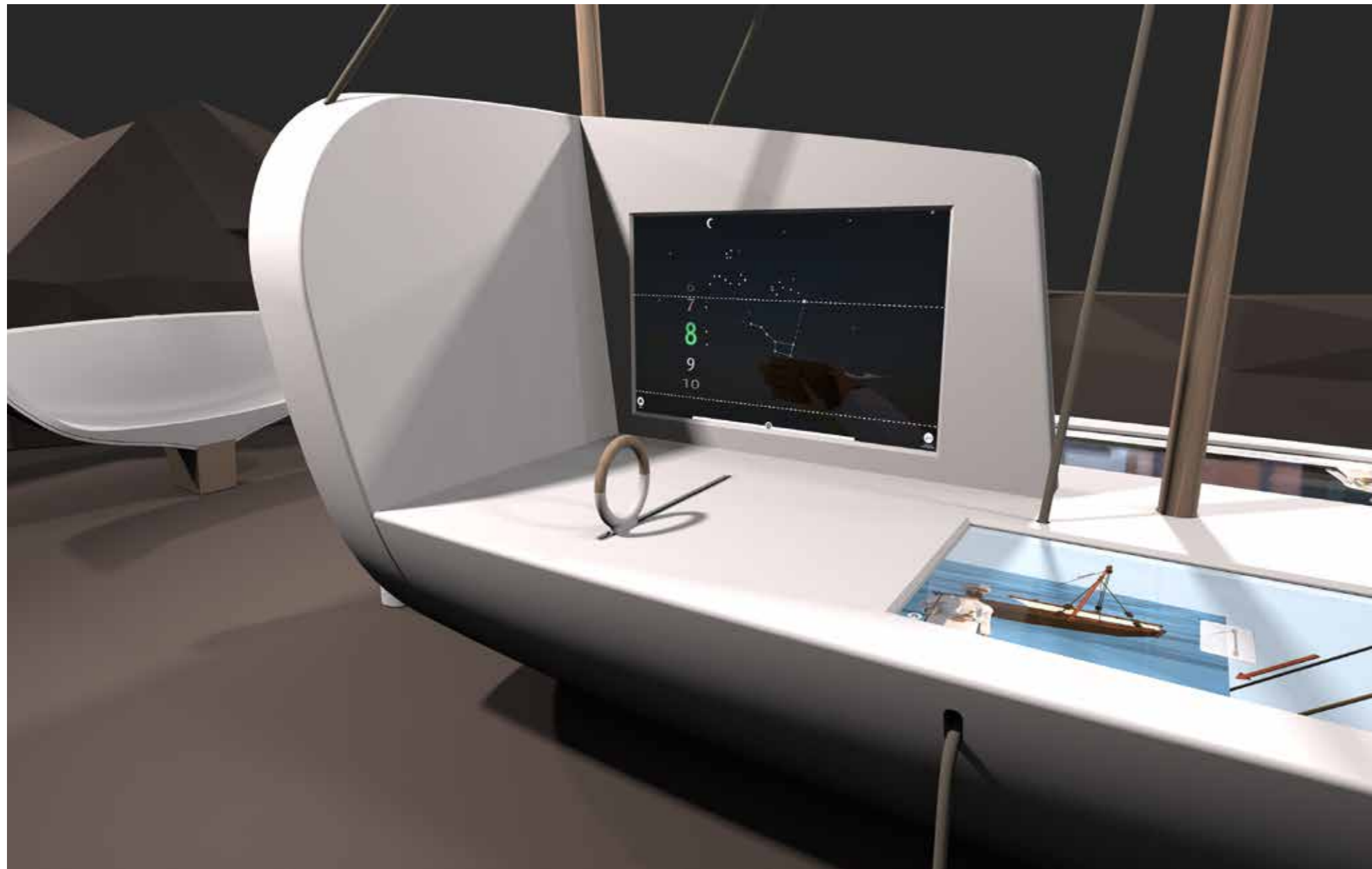
Musée des Beaux Arts, France
Audio activated by object.
Tactile and material discovery.

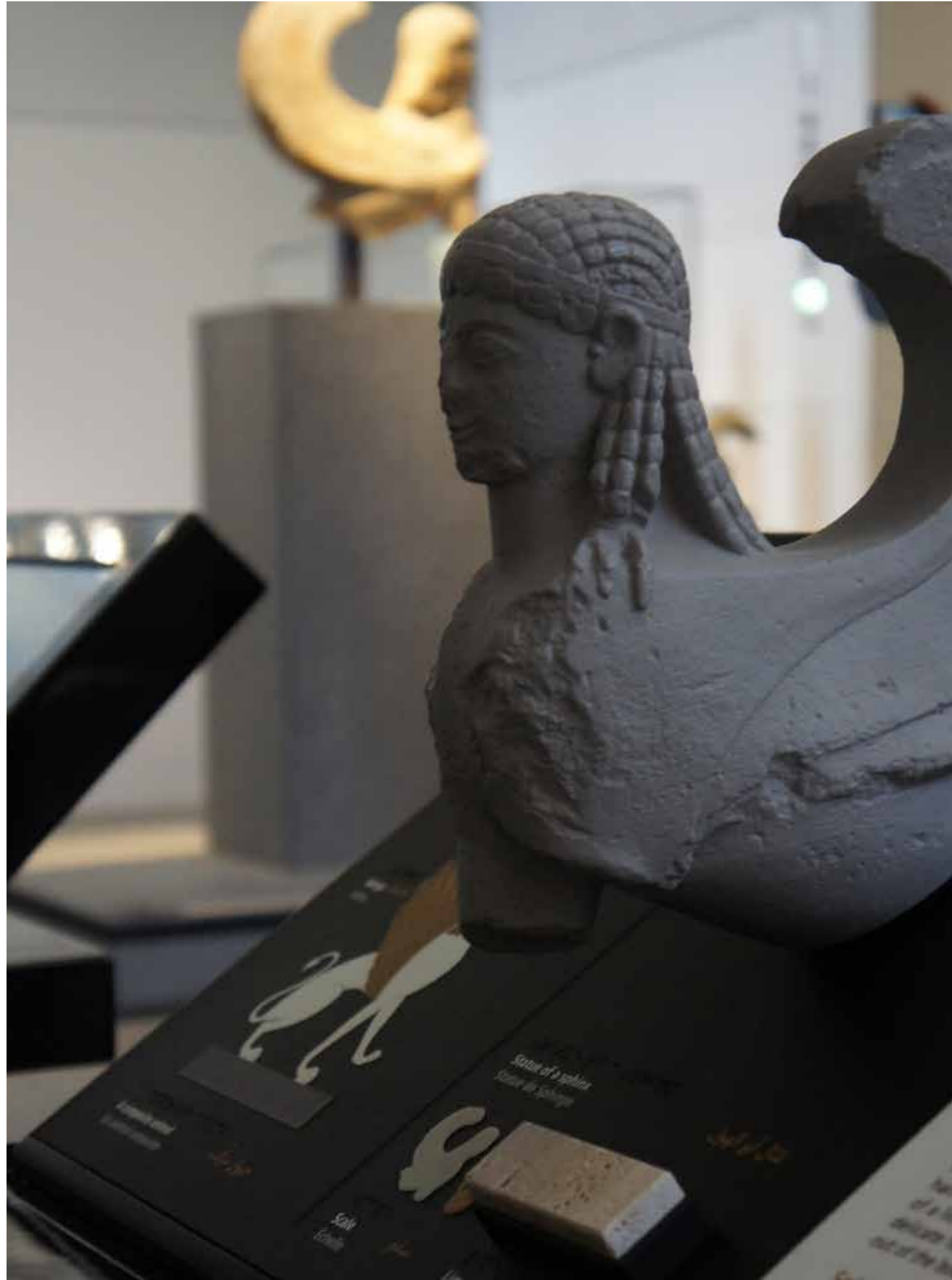




JJones Beach Energy & Nature Center, New York
Inclusive design

Oman Across Ages Museum
Interactive boat





Multisensory trails

Louvre Abu Dhabi
Tactile trail



Wellcome Collection, London
Tactile exhibits – medical heirlooms
Artwork: Tamsin van Essen

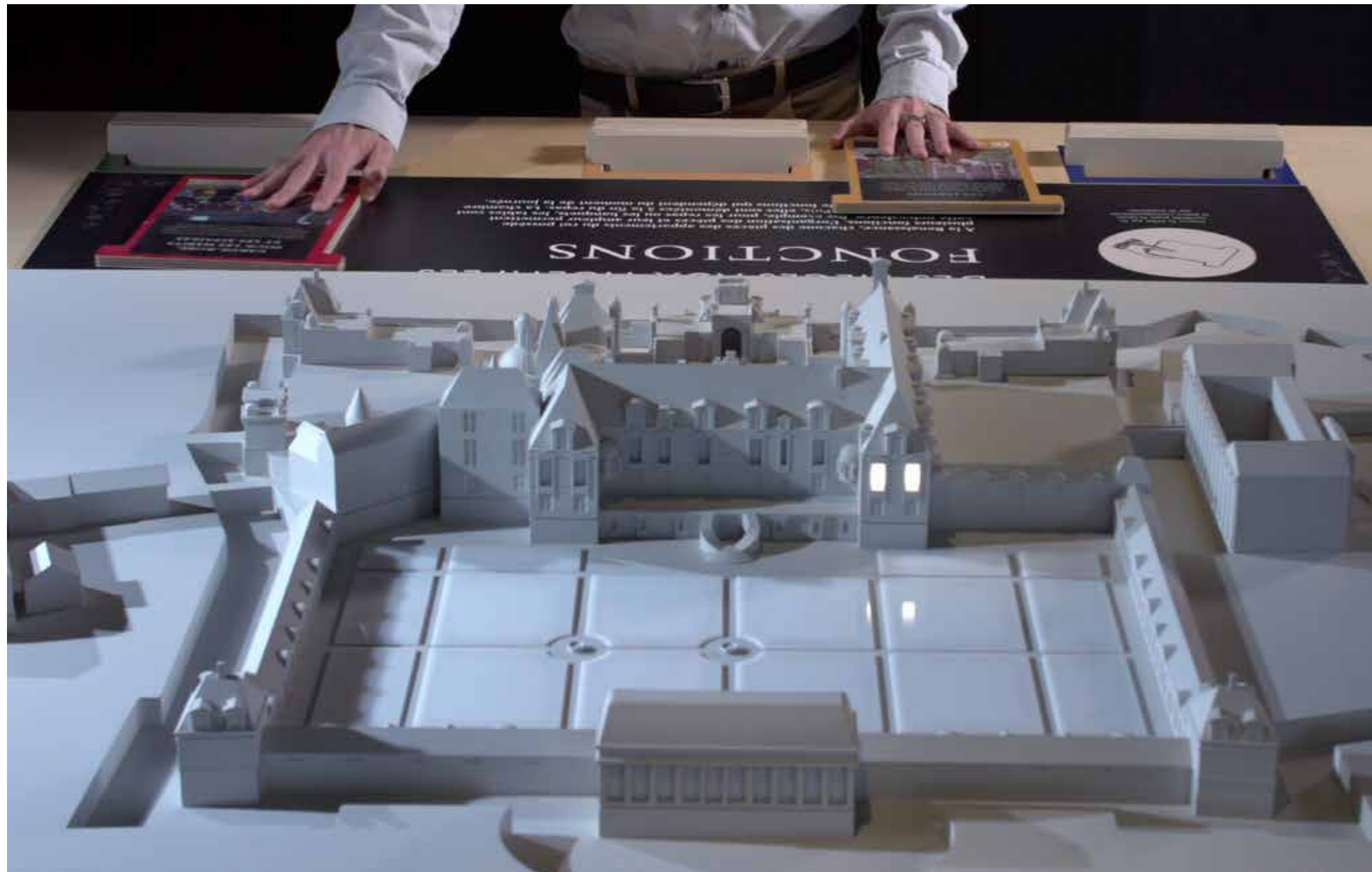


Augusta Raurica, Switzerland
Tactile station



©Photo Susanne Schenker

Château d'Anet, France
Interactive architectural model



Architectural models

Olympic Stadium Montreal, Canada
Tactile model and station





Apps and audio tours

Jones Beach Energy & Nature Center, New York
Apps and audio tour



Orientation solutions



Louis Vuitton Foundation, France
Tactile orientation solutions

Louis Vuitton Foundation, France
Tactile exterior maps





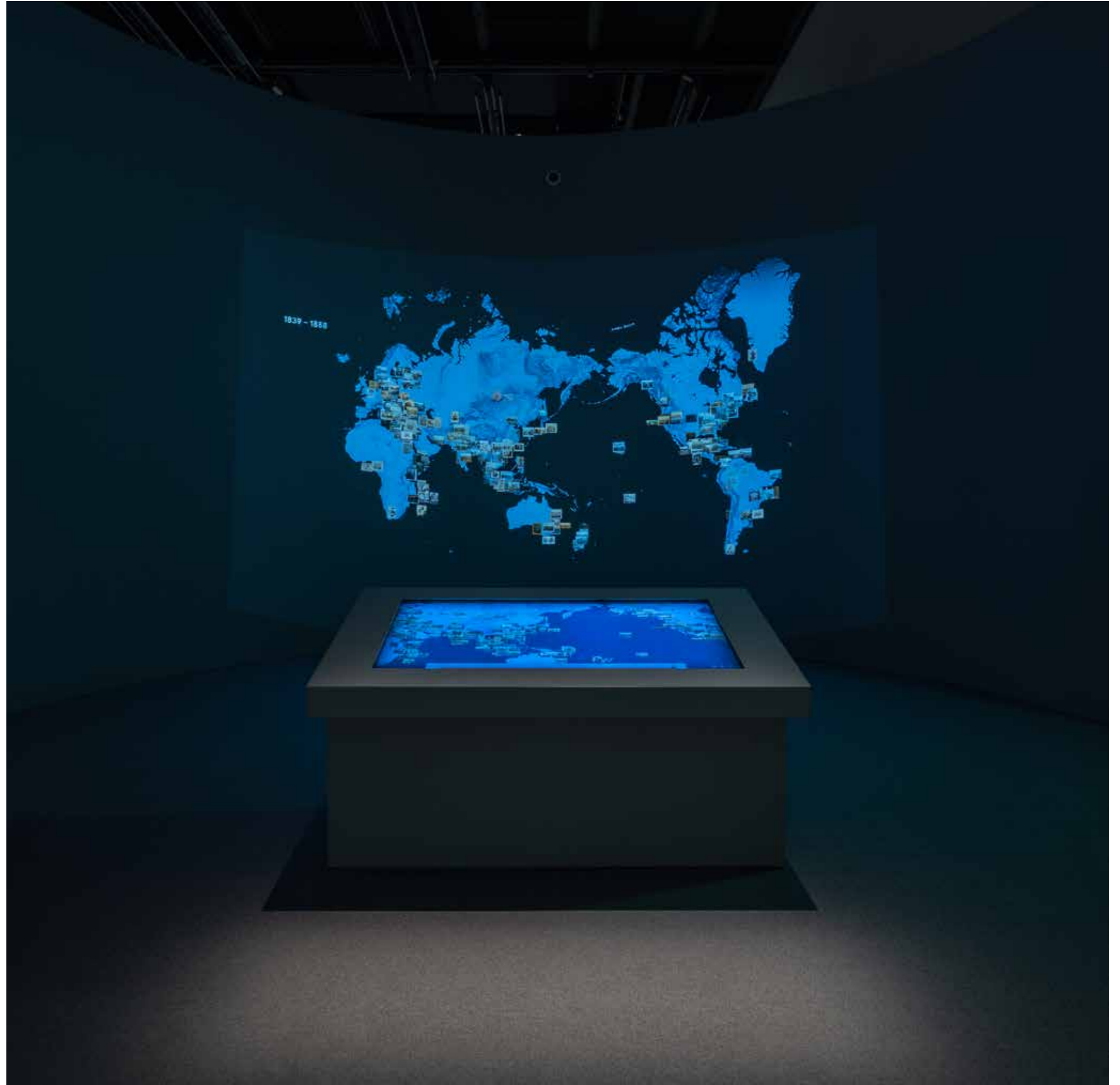
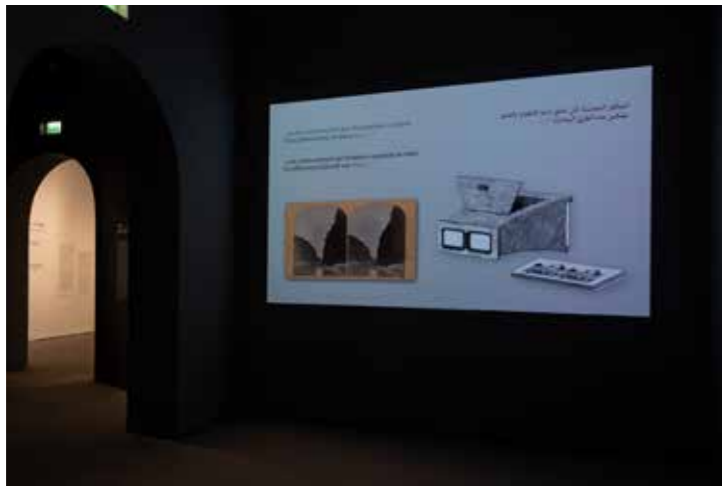
La Villette Paris, France
Interactive map and digital interface



Atmospheric interactives

Louvre Abu Dhabi
Exhibition: "Opening the album of the world: photographs 1842–1896"

Louvre Abu Dhabi
Atmospheric interactives:
routes and photographic process breakdown







tactilestudio

A branch of **Tactile Group**

Main office **PARIS**

Offices **DUBAI - MONTREAL - BERLIN**